
CONTACTS

General Questions

Cécile CAPDESSUS

Email: cecile.capdessus@surveillance7.fr

Phone: 00 33 (0)2 37 91 83 20

00 33 (0)2 37 33 38 38

Paper Submissions

Julien ROUSSEL

Email: julien.rousseau@surveillance7.fr

Phone: 00 33 (0)2 37 33 38 34

Registration and Payments

Christine SELLIER

Email: christine.sellier@surveillance7.fr

Phone: 00 33 (0)3 44 23 45 30

Scientific Program

Jérôme ANTONI

Email: jerome.antonini@surveillance7.fr

Phone: 00 33 (0)4 72 43 71 83

SFM

Alain KAVENOKY

Email: alain.kavenoky@surveillance7.fr

WEB SITE

<http://www.surveillance7.fr/>



Chartres is a beautiful medieval town located upon the Eure river, between Paris and the Loire Valley. Its cathedral is among the most famous ones in France, with 800 year old stained-glasses and sculptures. The old streets and little stone bridges offer nice walks through the city.

The city is both a beautiful place to visit and the center of an area full of Middle Ages and Renaissance wonders.

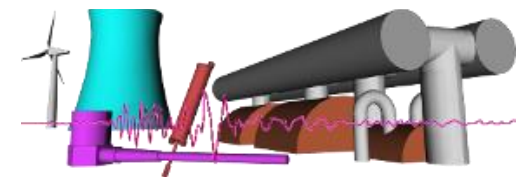


Notre-Dame de la Belle Verrière

Surveillance 7

7th International Conference

Acoustical and Vibratory Surveillance Methods and Diagnostic Techniques



Institute of Technology of Chartres,
France

October 29-30, 2013



TOPIC

This is the Seventh in the series of international conferences emphasizing acoustical and vibratory methods in surveillance and diagnostics organized by the French Society of Mechanics (SFM) and Institute of Technology of Chartres.

Monitoring and diagnosis are essential to the improved competitiveness of various industries, machinery 'downtime' is reduced, safe operation is increased, quality control in production is ensured on line, predictive maintenance decreases costs and standards are easily respected (noise, vibration, pollution, etc.).

A diagnostic system determines the internal state of a system and the need for operational actions. It is based upon information from sensors and a priori knowledge of the processes involved.

The methodology of monitoring and diagnostic takes advantages from significant developments in signal processing, information theory, physical models and inherent subjects, which are being put to practical use through advances in sensor technology and real time computation. The range of applications encompasses many areas of science, engineering, manufacturing and medicine.

There has been a major expansion in research and applications of monitoring and diagnosis in recent years, utilizing new processing techniques and sensors.

However, in spite of this, implementation of diagnostic systems is still limited in industry. Reliable systems require a multidisciplinary approach linking physical modeling with advanced signal processing and information theory concepts.

This conference is intended to be a forum for presentation and exchange of information from researchers and industrial people in various fields (acoustic, vibrations and modelling, reliability analysis, diagnostic, control, signal processing, sensors).

The conference is opened to the whole scientific and industrial community in the areas listed below:

- 1. Machines**
(Mechanical components, design,...)
- 2. Vibrations & Acoustics**
(Linear and non linear modelling and identification, non stationary models,...)
- 3. Numerical Modelling**
(Finite Elements Methods, models for diagnostics, model updating, cracks models,...)
- 4. Measurement and Testing Techniques**
(Sensors and instrumentation, smart sensors, data acquisition and transfer, emerging technologies, smart structures,...)
- 5. Signal Processing, Model Identification**
(Detection, estimation, time frequency techniques, higher order statistics, cyclostationarity, source separation,...)
- 6. Diagnosis Techniques**
(Structural Health Monitoring, Non-Destructive Testing,...)
- 7. Surveillance Techniques**
(Fuzzy, neural networks, genetic algorithms, innovation detection, data mining,...)
- 8. Predictive Maintenance, Condition Monitoring and Prognosis**
(Risk and reliability, statistics, probabilistic methods, Markov-chains,...)
- 9. Industrial Applications and Case Studies**
(Gears, rolling element bearings, electric machines, internal combustion engines, turbines, wind mills,...)

SCIENTIFIC COMMITTEE

- **General Chair:** Simon G. Braun, Technion Israel Institute of Technology, Israel
- **Associate Chair:** Jerome Antoni, INSA de Lyon, France

David BRIE (France)	Asoke K. NANDI (England)
Jean-Daniel CHAZOT (France)	Ioannis ANTONIADIS (Greece)
Jean-Luc DION (France)	Spilios FASSOIS (Greece)
Jean-Paul DRON (France)	Giorgio DALPIAZ (Italy)
Mohamed EL BADAoui (France)	Luigi GARIBALDI (Italy)
Rafael GOURIVEAU (France)	Paolo PENNACCHI (Italy)
Nadine MARTIN (France)	Riccardo RUBINI (Italy)
Charles PEZERAT (France)	Alessandro RIVOLA (Italy)
Didier REMOND (France)	Renata KLEIN (Israel)
Roger SERRA (France)	Amani RAAD (Lebanon)
Christian CREMONA (France)	Tomasz BARSZCZ (Poland)
Guy D'URSO (France)	Czeslaw CEMPEL (Poland)
Mario ELTABACH (France)	Wojciech CHOLEWA (Poland)
Jean-Pierre GRISVAL (France)	Tadeus UHL (Poland)
Wilfrid RAGUENET (France)	Radoslaw ZIMROZ (Poland)
Sophie SIEG-ZIBA (France)	Fakher CHAARI (Tunisia)
Jean-Luc VASSELIN (France)	Mnaouar CHOUCANE (Tunisia)
Ahmed FELKAOUI (Algeria)	Mohamed HADDARD (Tunisia)
Bob RANDALL (Australia)	
Gaetan KERSCHEN (Belgium)	
Marc THOMAS (Canada)	

DEADLINES (UPDATED!)

- **1-page abstract:** April 30, 2013
- **Notification of acceptance:** June 1, 2013
- **Full-length paper:** October 1, 2013
- **Early registration:** until August 31, 2013